

Imraldi™ Autoinjector Pen

Quick Use Guide

This quick use guide is a shortened version of the patient information leaflet. These instructions are supplied as a guide only. **Please read the full patient information leaflet before you use your pen for the first time.**¹

1

⚠ Do not remove the cap just yet!

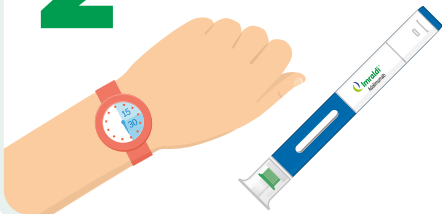


1 | WASH HANDS & GATHER SUPPLIES

- ▶ Wash your hands, and place the pen and alcohol pad for disinfection on a clean, dry surface.
- ▶ Do not remove the cap just yet.

2

⚠ Do not remove the cap just yet!

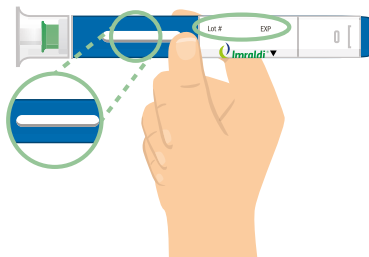


2 | BRING MEDICATION TO ROOM TEMPERATURE

- ▶ Wait 15-30 minutes for your pen to reach room temperature, which helps reduce your pain during injection.
- ▶ Do not remove the cap just yet.

3

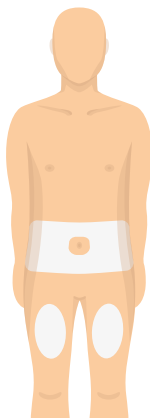
⚠ Do not remove the cap just yet!



3 | INSPECT MEDICINE & EXPIRATION DATE

- ▶ If your medication is not clear, not free of particles, or is expired, do not use it.
 - ▶ You may see 1 or more bubbles, and that is okay. There is no reason to remove it.
 - ▶ Do not remove the cap just yet.
- ✓ No Particles
 - ✓ Clear
 - ✓ Colourless
 - ✓ Not Expired

4



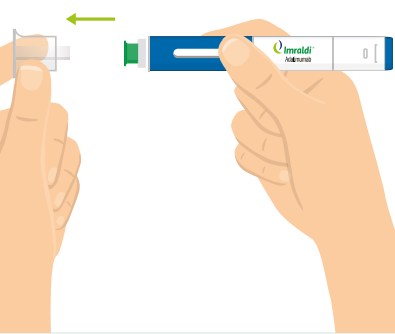
4 | CHOOSE INJECTION SITE & CLEAN SKIN

- ▶ Wash your hands again thoroughly.
- ▶ Choose an injection site on your body. Fatty areas, such as your abdomen (except the area around the navel) or thighs are best.
- ▶ Avoid skin that is sore, bruised, scarred, scaly, or has red patches.
- ▶ Clean the injection site with an alcohol pad, and let it dry.
- ▶ Do not touch the area again before the injection.

Imraldi™ Autoinjector Pen

Quick Use Guide (cont.)

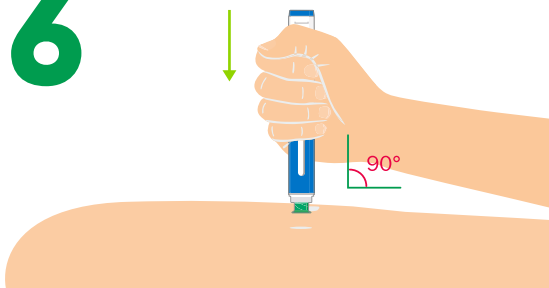
5



5 | CAREFULLY PULL OFF THE CLEAR NEEDLE CAP

- ▶ It is normal to see a few drops of liquid come out of the needle.
- ▶ If you do take off the cap before you are ready to inject, **do not put the needle cap back on.** This could bend or damage the needle. You might accidentally stick yourself or waste medication.

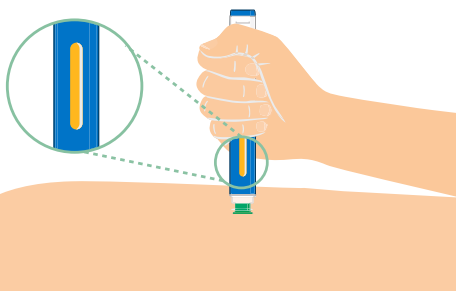
6



6 | PLACE GREEN BASE STRAIGHT (90 DEGREES) ON SKIN, PUSH THE ENTIRE PRE-FILLED PEN DOWN FIRMLY, AND HOLD

- ▶ When you push down, the injection starts. You may hear a 1st click.

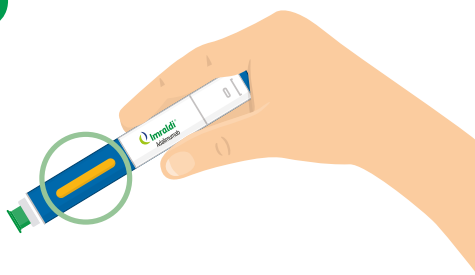
7



7 | CONTINUE TO HOLD

- ▶ Hold the pen firmly in place against your skin until the yellow indicator fills the medication window and stops moving.
- ▶ Several seconds later you may hear a 2nd click.

8



8 | CONFIRM COMPLETION & DISPOSE AS DIRECTED

- ▶ You received your dose if...
 - ▷ The entire medication window is yellow
 - ▷ No medicine leaked out (a small drop is okay)
- ▶ Throw away the used pen in a special container as instructed by your doctor, nurse or pharmacist. If you are not sure you received the dose, contact your doctor, nurse, or pharmacist.

Adverse events should be reported.

To report an adverse event, please use the relevant telephone contact numbers you will find [here](#).
Alternatively, email: medinfo.europe@biogen.com

Reference:

1. Imraldi™ (adalimumab) Summary of Product Characteristics. https://www.ema.europa.eu/en/documents/product-information/imraldi-epar-product-information_en.pdf. Accessed May 2023.